

METROPOLITAN TOPEKA AIRPORT AUTHORITY

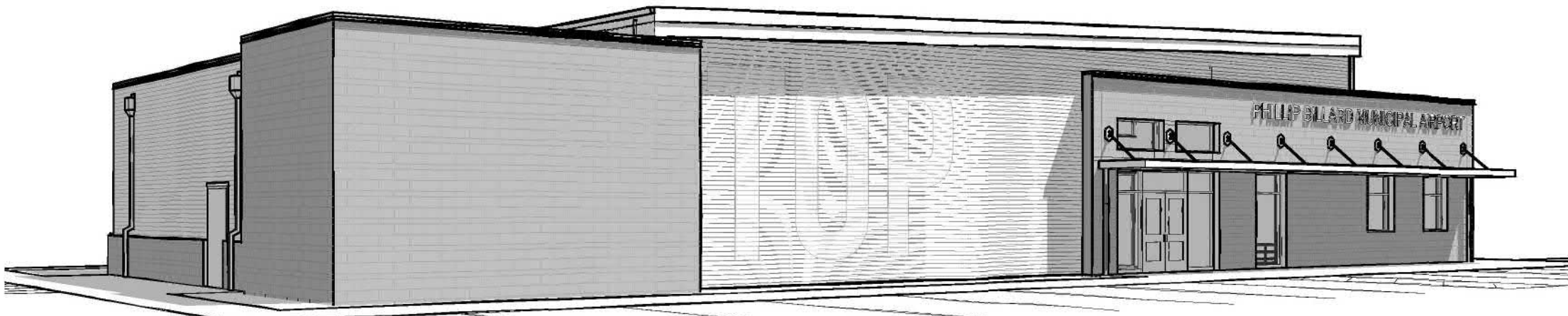
BILLARD TERMINAL



3D RENDERED VIEW - EAST



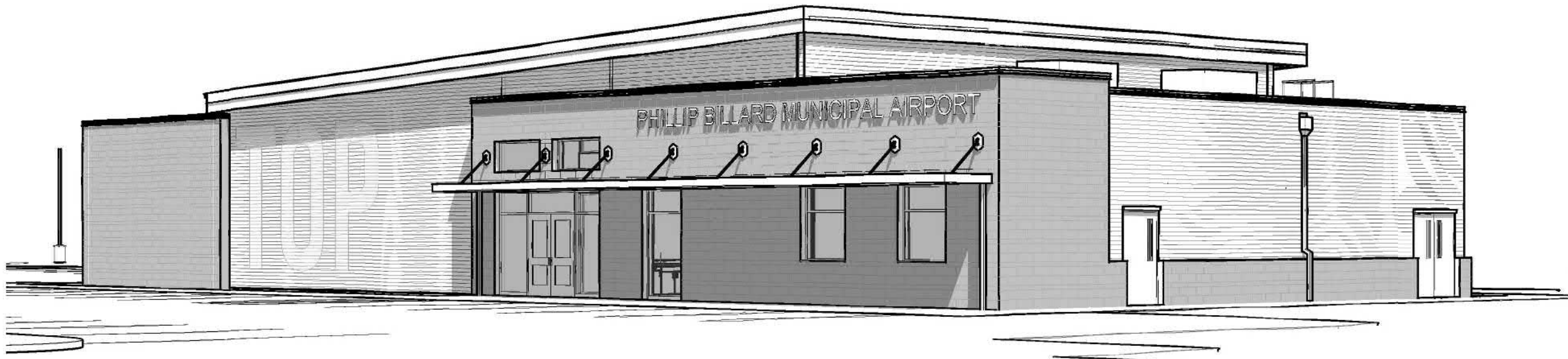
3D VIEW - EAST



3D VIEW - NORTH



3D VIEW - SOUTH



3D VIEW - WEST

SHEET INDEX

INFORMATION

G101 TITLE SHEET  
G201 INFORMATION  
G301 CODE FOOTPRINTS

CIVIL

C000 CSPP COVER SHEET  
C001 CSPP OVERVIEW  
C002 CSPP SAFETY PLAN NOTES  
C003 CSPP SAFETY PLAN NOTES  
C111 CSPP PHASE 1 PLAN & TRAFFIC CONTROL  
C112 CSPP PHASE 2 PLAN & TRAFFIC CONTROL  
C113 CSPP PH1 & PH2 DETAILS  
CG001 INDEX, LEGEND, & ABBREVIATIONS  
CG002 GENERAL NOTES  
C201 EXISTING SITE GRADING  
C202 DEMOLITION PLAN  
C301 SITE LAYOUT & GRADING PLAN (NEW FACILITY)  
C302 SITE POINT PLAN  
C304 SITE POINT TABLE  
C401 UTILITY DEMOLITION SITE PLAN  
C402 UTILITY IMPROVEMENT SITE PLAN  
C501 STANDARD CIVIL DETAILS  
C502 RAMP & WALK DETAILS (DT-304)  
C503 EROSION & POLLUTION CONTROL DETAILS (COT DT-420)  
C504 EROSION & POLLUTION CONTROL DETAILS (COT DT-421)

ARCHITECTURAL

AS101 ARCHITECTURAL SITE PLAN  
A101 ARCHITECTURAL FLOOR PLAN  
A102 ENLARGED FLOOR PLANS  
A201 BUILDING ELEVATIONS  
A202 INTERIOR ELEVATIONS  
A203 INTERIOR ELEVATIONS  
A301 BUILDING SECTIONS  
A302 WALL SECTIONS  
A303 WALL SECTIONS  
A304 WALL SECTIONS DETAILS  
A401 ROOF PLAN DETAILS  
A501 DOOR, FRAME, & WINDOW SCHEDULES & DETAILS  
A502 OPENING DETAILS  
A601 REFLECTED CEILING PLANS  
A701 FINISH FLOOR PLAN

STRUCTURAL

S001 GENERAL NOTES  
S002 SPECIAL INSPECTIONS  
S101 FOUNDATION PLAN  
S102 FRAMING PLAN  
S200 BRACE FRAME ELEVATIONS  
S201 FRAMING DETAILS

PLUMBING

ME101 COVER SHEET  
ME201 SITE PLAN  
ME202 SITE DETAILS  
ME301 CONTROL SCHEMATIC  
ME302 CONTROL SCHEMATIC  
P101 MAIN LEVEL BELOW GRADE - PLUMBING  
P102 MAIN LEVEL - PLUMBING  
P103 PARTIAL FLOOR PLAN  
P104 ROOF PLAN - PLUMBING

MECHANICAL

M101 MAIN LEVEL - HVAC  
M102 ROOF PLAN - HVAC  
M103 PARTIAL FLOOR PLAN  
MP101 MECHANICAL DETAILS  
MP102 MECHANICAL DETAILS  
MP103 MECHANICAL SCHEDULES  
MP104 MECHANICAL SCHEDULES

ELECTRICAL

E101 MAIN LEVEL - POWER  
E102 MAIN LEVEL - HVAC POWER  
E103 PARTIAL FLOOR PLAN  
E201 MAIN LEVEL - LIGHTING  
E301 ELECTRICAL DETAILS/SCHEDULES  
E302 PANEL SCHEDULES

TELECOM

T101 MAIN LEVEL - TELECOM  
T201 MAIN LEVEL SECURITY  
T301 TELECOM SCHEDULES AND DETAILS

FOOD SERVICE

QF101 FOOD SERVICE EQUIPMENT PLAN  
QF201 FOOD SERVICE ELECTRICAL ROUGH-IN PLAN  
QF301 FOOD SERVICE PLUMBING ROUGH-IN PLAN  
QF401 FOOD SERVICE SPECIAL CONDITIONS PLAN

PROJECT CONTACTS

OWNER  
MTAA

6510 SE Forbes Ave  
Topeka, KS 66619  
PROJECT CONTACT  
Eric Johnson  
(785) 862-2365

ARCHITECT  
HTK Architects

900 S. Kansas Ave., Suite 200  
Topeka, KS 66612

PROJECT CONTACT  
Cassandra Taylor  
(785) 266-5373

CIVIL ENGINEER  
WSP USA

300 Wyandotte Street, Suite 200  
Kansas City, MO 64105

PROJECT CONTACT  
Sam Stalbaum  
(816) 702-4244

STRUCTURAL ENGINEER  
WSP USA

211 North Broadway, Suite 2800  
St. Louis, Mo 63102

PROJECT CONTACT  
Eric Holtmann  
(314) 206-4232

MECHANICAL, ELECTRICAL,  
PLUMBING ENGINEER  
Latimer Sommers & Assoc., P.A.

3636 SW Summerfield Dr., Suite A  
Topeka, KS 66614

PROJECT CONTACT  
Jim Latimer  
(785) 233-3232

FOOD SERVICE  
TriMark USA, LLC

14603 W. 112th St.  
Lenexa, KS 66215

PROJECT CONTACT  
Adam Rich  
(913) 998-7526



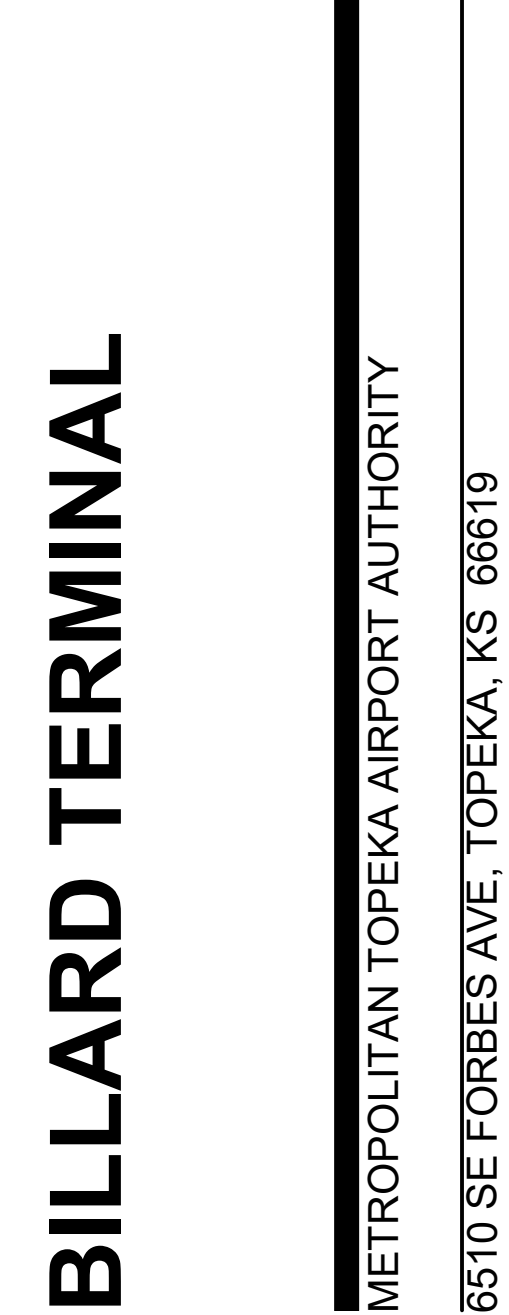
SITE LOCATION



DATE:  
● 08/12/2022

REVISED DATE:

●



SHEET CONTENTS:  
TITLE SHEET

HTK PROJECT NUMBER:  
● 2020.2.7

SHEET NUMBER:

G101

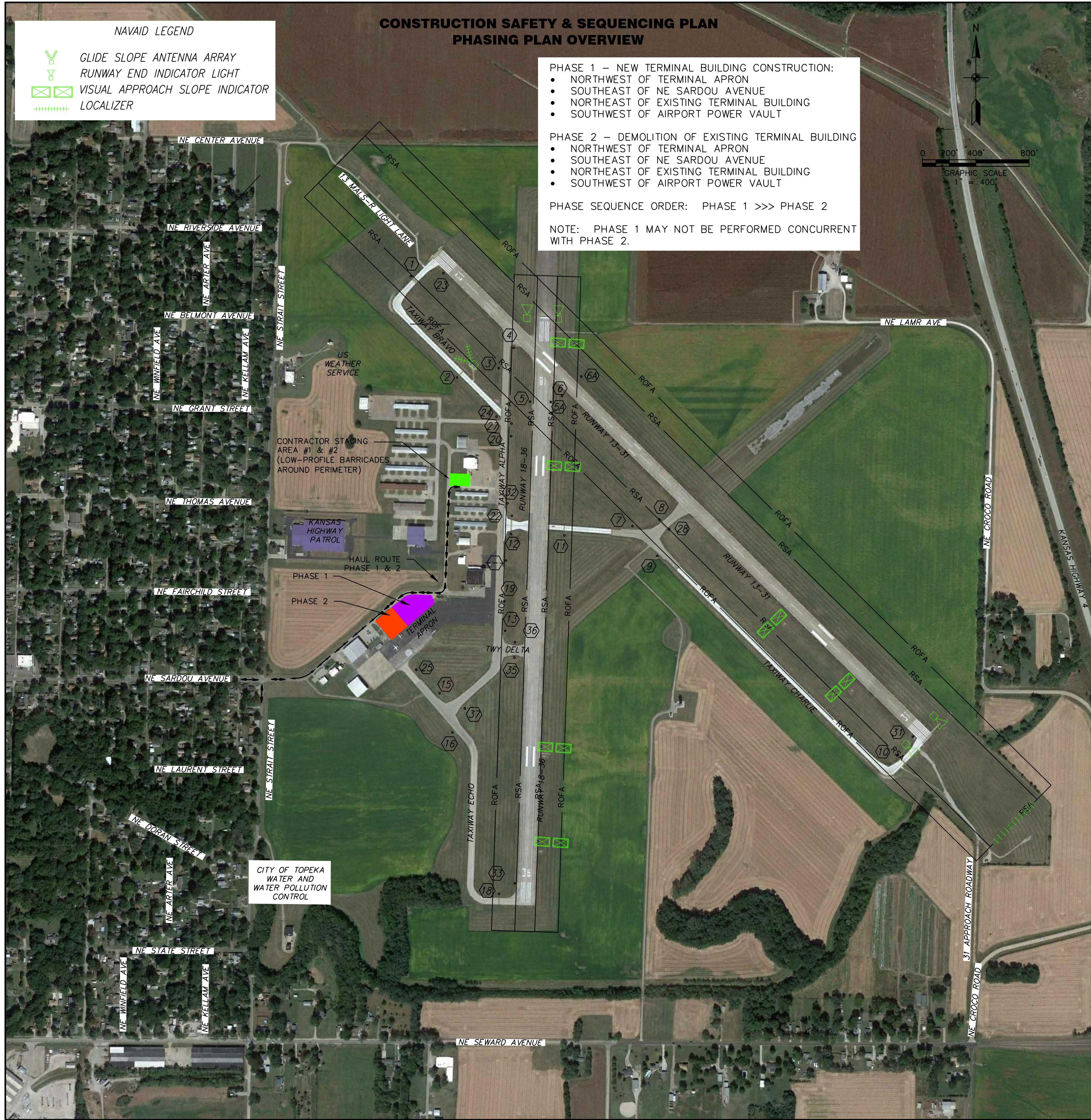
CONSTRUCTION DOCUMENTS



ZONE TABLE				
ZONE DESCRIPTION	LOCATION	ACRONYM	TOTAL WIDTH(FT)	DIST FROM CL (FT)
RUNWAY SAFETY AREA	RWY 13-31	RSA	500'	250'
	RWY 18-36	RAS	150'	75'
RUNWAY OBJECT FREE AREA	RWY 13-31	ROFA	800'	400'
	RWY 18-36	ROFA	500'	250'
TAXIWAY SAFETY AREA	A-B-C-C1-D-E	TSA	79'	39.5'
TAXIWAY OBJECT FREE AREA	A-B-C-C1-D-E	TOFA	131'	65.5'
OBSTACLE FREE ZONE	RWY 13-31	OFZ	400'	200'
	RWY 18-36	OFZ	400'	200'

GENERAL NOTES:

1. COORDINATION
- THE CONTRACTOR SHALL PROVIDE A PROJECT SUPERINTENDENT WHO SHALL BE ON THE PROJECT SITE AT ALL TIMES WHILE WORK IS BEING PERFORMED TO SUPERVISE AND DIRECT THE CONSTRUCTION. THE PROJECT SUPERINTENDENT SHALL SERVE AS THE ON-PROJECT SAFETY COORDINATOR FOR THE CONTRACTOR AND BE EQUIPPED WITH A RADIO CAPABLE OF COMMUNICATING WITH THE AIR TRAFFIC CONTROL TOWER (ATCT) FOR THE PURPOSES OF RECEIVING INSTRUCTIONS AND OBTAINING CLEARANCES AS NEEDED. THIS RADIO IS FOR THE PROJECT SUPERINTENDENT'S EXCLUSIVE USE ONLY AND SHALL BE ON HIS PERSON AT ALL TIMES. THE SUPERINTENDENT SHALL BE THE 24 HOUR ON-CALL REPRESENTATIVE FOR EMERGENCY SITUATIONS. THE PROJECT SUPERINTENDENT SHALL BE RESPONSIBLE FOR SECURING PERMISSION FROM THE ATCT FOR CONSTRUCTION VEHICLES TO ENTER INTO AIRCRAFT MOVEMENT AREAS, WHEN NECESSARY, AND TO COMMUNICATE WITH THE ATCT DURING THE CONSTRUCTION FOR THE PROJECT. CONTRACTOR SHALL NOT ACCESS AIRCRAFT MOVEMENT AREA WITHOUT TOWER PERMISSION. GROUND CONTROL RADIO FREQUENCY IS 121.9 MHZ. TOWER CONTROL RADIO FREQUENCY IS 118.7 MHZ. GROUND FREQUENCY TO BE USED FOR A MAJORITY OF THE OPERATIONS. TOWER CONTROL FREQUENCY TO BE USED WHEN OCCUPYING A RUNWAY OPEN TO AIR TRAFFIC.
  - CONTRACTOR SUPERINTENDENT SHALL BE RESPONSIBLE FOR COMMUNICATING WITH THE ATCT IN THE EVENT THAT ACCESS TO AIRCRAFT MOVEMENT AREAS BECOME NECESSARY AND TO RECEIVE SPECIAL INSTRUCTIONS FROM THE ATCT IN THE CASE OF AN EMERGENCY.
  - CONTRACTOR SHALL BE RESPONSIBLE FOR COORDINATING MOVEMENT OF WORKERS WITHIN THE AIRCRAFT OPERATIONS AREA, THE DELIVERY OF MATERIALS TO THE PROJECT SITE AND THE ESCORTS FOR THOSE VEHICLES ONTO AND FROM THE PROJECT SITE THROUGH THE AIRCRAFT OPERATIONS AREA. ESCORT VEHICLES SHALL BE REQUIRED TO HAVE RADIO COMMUNICATION WITH THE TOWER AT ALL TIMES (SUPERINTENDENT'S RADIO IS NOT TO BE USED BY ESCORT VEHICLES). ALL WORK ASSOCIATED WITH PROJECT WILL BE PERFORMED AS BID AND TO THE LIMITS INDICATED BELOW.
  - ACCESS ROUTES FROM AND THROUGH THE APRON AREA SHALL BE ADEQUATELY DELINEATED WITH CONES AND/OR BARRICADES TO MARK TRAVEL ROUTES FOR DELIVERY VEHICLES AND TO PREVENT VEHICLES FROM STRAYING FROM DESIGNATED TRAVEL ROUTES.
  - TRAFFIC CONTROL DEVICES SHALL BE ERECTED TO CONTROL CONSTRUCTION TRAFFIC TO ONE AREA OF THE RAMP TO BE UTILIZED AS ACCESS ROADWAYS. MAXIMUM PATHWAY WIDTH IS 30'.
  - SPEED LIMIT ON HAUL ROUTES, ACTIVE APRONS AND TAXIWAYS AND RUNWAYS IS 20 MPH UNLESS OTHERWISE POSTED.
  - CONTRACTOR'S PERSONNEL WILL BE ALLOWED TO PARK PERSONAL VEHICLES IN STAGING AREA #1 & #2 DURING PHASE 1 & 2.
  - CONTRACTOR SHALL MAINTAIN CONTROL OF EQUIPMENT AND PERSONNEL AND PREVENT THE MOVEMENT OF THE SAME OUTSIDE OF THE PROJECT LIMITS AND/OR THROUGH ACTIVE AIRCRAFT OPERATION AREAS. ACTIVE AIRCRAFT OPERATION AREAS INCLUDE TAXIWAYS AND RUNWAYS NOT CLOSED DUE TO THE PROJECT REQUIREMENTS. FOR EXAMPLE, WHILE AIRCRAFT MAY BE MOVING ALONG OPEN TAXIWAYS, CONTRACTOR'S PERSONNEL WILL NOT BE PERMITTED TO ACCESS THESE OPEN TAXIWAYS WITHOUT SECURING PERMISSION FROM THE ATCT. CONTRACTOR EQUIPMENT, VEHICLES, AND PERSONNEL SHALL YIELD TO ALL AIRCRAFT MOVEMENT AND EMERGENCY EQUIPMENT. CONTRACTOR'S EQUIPMENT SHALL BE REMOVED FROM ROFA WHEN NOT IN USE.
  - THE NORMAL WORKDAY WILL OCCUR BETWEEN THE HOURS OF 7:00 AM AND 6:00 PM.



- LEGEND
- PHASE 1
  - PHASE 2
  - CONTRACTOR STAGING AREA
  - SIGN INVENTORY NUMBER/LOCATION
  - REGULATORY SIGN:
  - STOP SIGN
  - ACCESS/HAUL ROUTE
  - FLAGPERSON
  - LIGHTED RUNWAY CLOSURE MARKER
  - RUNWAY CLOSURE MARKER (CLOTH)
  - TAXIWAY CLOSURE MARKER
  - LOW PROFILE BARRICADE
  - RSA — RUNWAY SAFETY AREA
  - ROFA — RUNWAY OBJECT FREE AREA
  - TSA — TAXIWAY SAFETY AREA



DATE: 08/12/2022  
REVISED DATE:



BILLARD TERMINAL

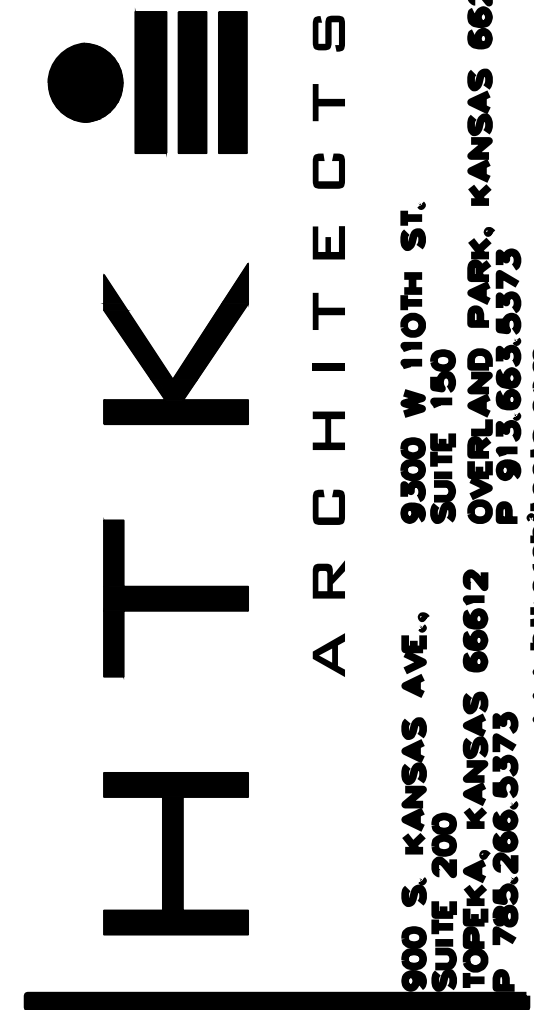
SHEET CONTENTS:  
CSPP OVERVIEW

HTK PROJECT NUMBER:  
2020.2.7  
WSP 30900280B

SHEET NUMBER:

C001

CONSTRUCTION DOCUMENTS







**SITE UTILITIES IMPROVEMENT SITE PLAN**  
SCALE: 1"=10'



**REFERENCE NOTES:**

- CONNECT TO EX. 6" WASTE FROM TERMINAL BUILDING.
- COORDINATE WITH P/C ON CONNECTION TO WASTE LINE(S) LEAVING NEW TERMINAL BUILDING.
- AFTER COMPLETION OF NEW TERMINAL BUILDING DISCONNECT AND CAP THIS LINE. ABANDON IN PLACE.
- MAKE TAP TO EX. WATER MAIN AND PROVIDE CORPORATION STOP UNDER SUPERVISOR OF CITY AND COMPLYING WITH CITY WATER UTILITY SERVICE STANDARDS.
- 3 NEW WATER METERS FOR 1" SERVICE TO FBO, 2" SERVICE TO MTAA AND 1-1/2" SERVICE TO FOOD SERVICE KITCHEN. METERS, SETTERS, METER PITS, RINGS AND COVERS WILL BE FURNISHED BY CITY FOR INSTALLATION BY CONTRACTOR. PAY ALL FEES INCURRED AND COMPLY WITH CITY WATER UTILITY INSTALLATION STANDARDS. CONTACT: CITY OF TOPEKA, DUNCAN THEURI - 785-368-0152
- COORDINATE WITH P/C ON CONNECTIN TO WATER LINES AT NEW TERMINAL BUILDING.
- COORDINATE WITH NATURAL GAS UTILITY FOR NEW SERVICE TO 3 METERS. PAY ALL FEES INCURRED AND COMPLY WITH ALL UTILITY STANDARDS. LOADS ARE AS FOLLOWS:  
FBO METER: 150 CFH  
MTAA METER: 200 CFH  
FOOD SERVICE METER: 1084 CFH  
REQUIRED DELIVERY PRESSURE IS 7" W.C.  
CONTACT: KANSAS GAS SERVICE, RYAN OLSON - 785-506-4662
- 4" FLUSH GRADE CLEANOUT, FLUSH WITH GRADE. REFER TO DETAIL SHEET ON ME202 OF PLUMBING PLANS.
- REFER TO SHEET ME201 OF PLUMBING PLANS.

**GENERAL NOTES:**

- INSTALLATION OF BELOW GRADE SANITARY AND DOMESTIC WATER PIPING SHALL COMPLY WITH ALL CITY STANDARDS. REFER TO PLUMBING SPECIFICATIONS FOR MATERIALS AND CHARACTERISTICS.

HTK ARCHITECTS  
900 S. KANSAS AVE., SUITE 200  
TOPEKA, KS 66602  
P 785-266-5373  
www.htkarchitects.com

WSP  
WSP USE  
300 Wyandotte Street, Suite 200  
Kansas City, MO 64105  
wsp.com

**DATE:**  
● 08/12/2022

**REVISED DATE:**  
●

**BILLARD TERMINAL**  
METROPOLITAN TOPEKA AIRPORT AUTHORITY  
TOPEKA REGIONAL AIRPORT & BUSINESS CENTER  
6510 SE FORBES AVE., TOPEKA, KS 66619

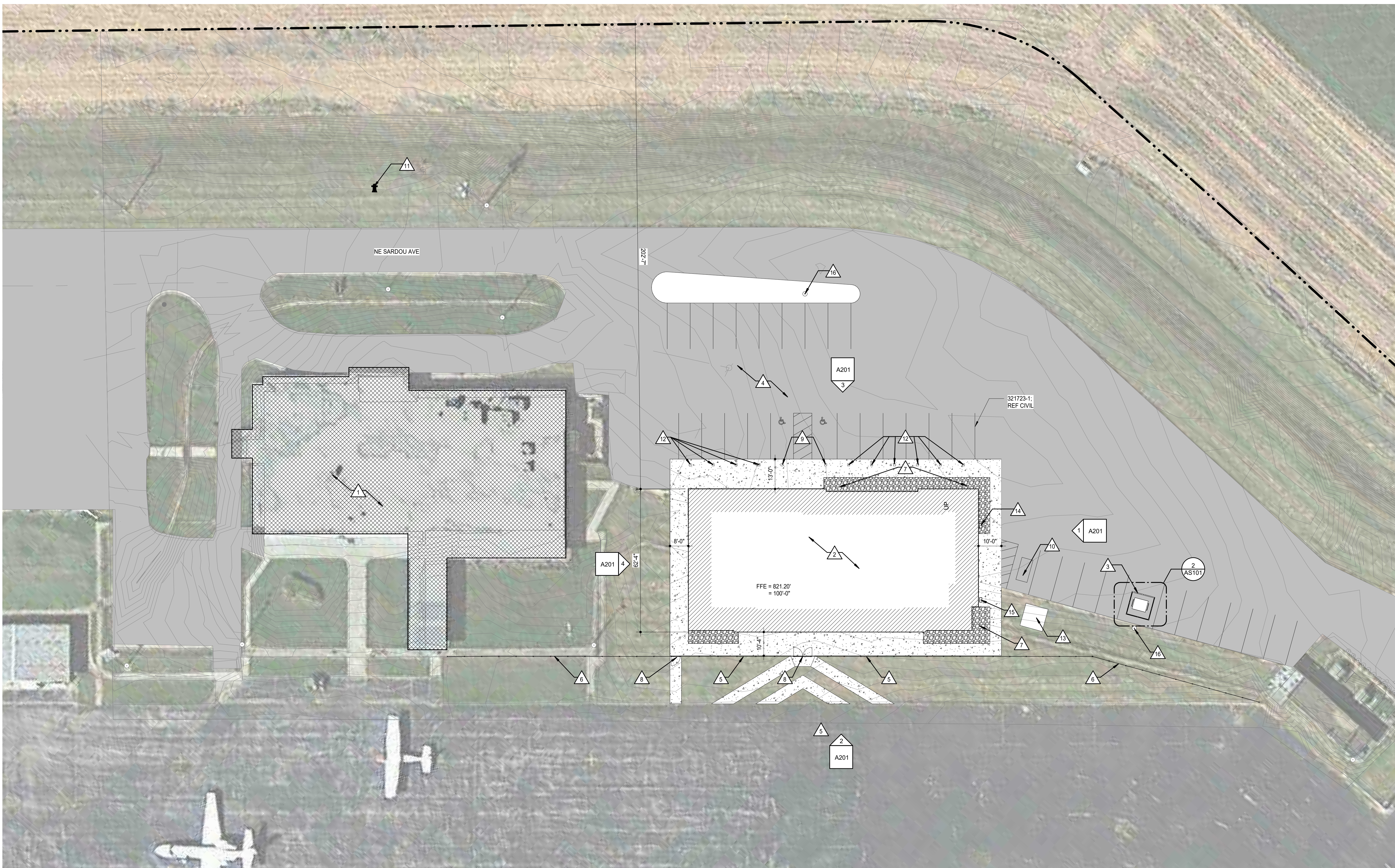
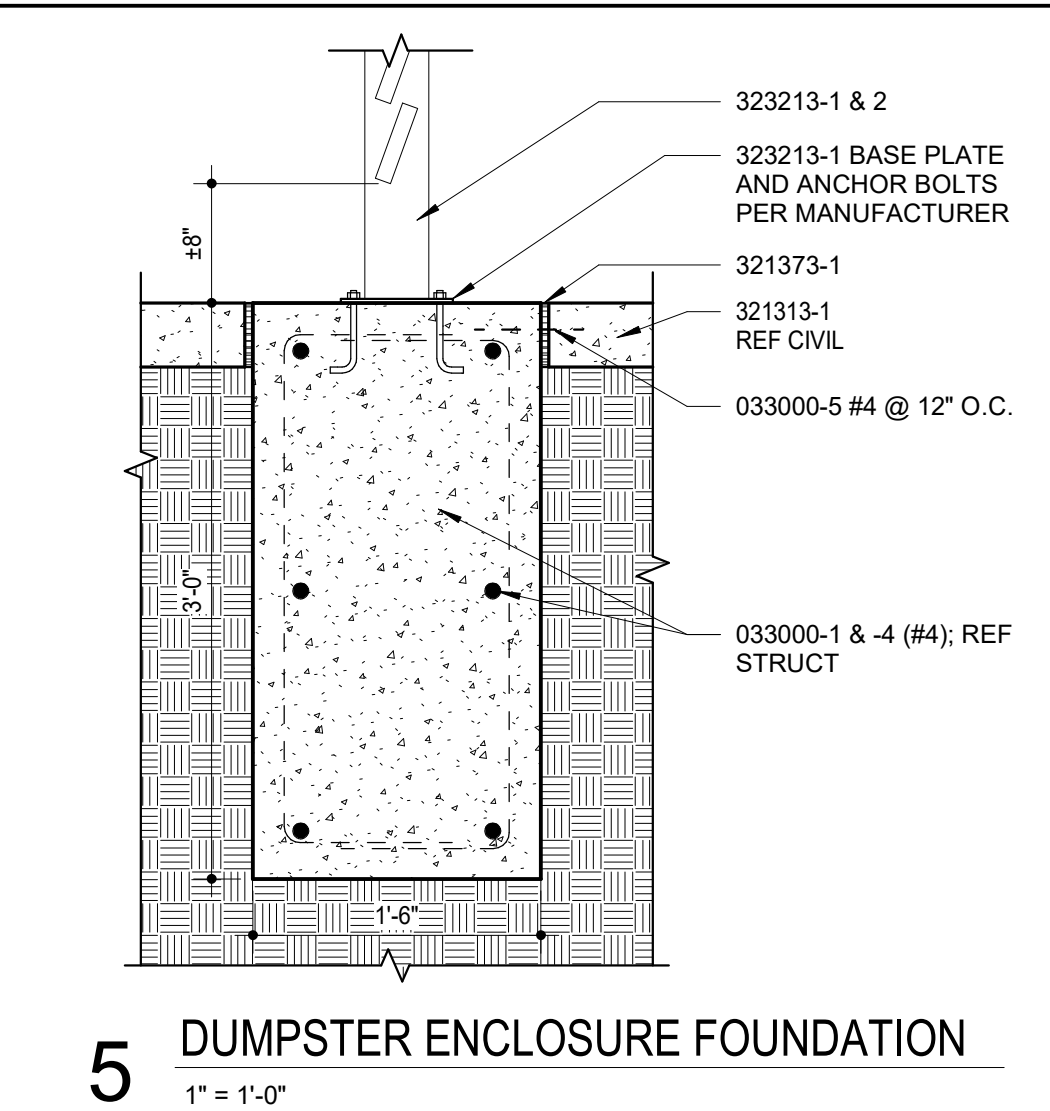
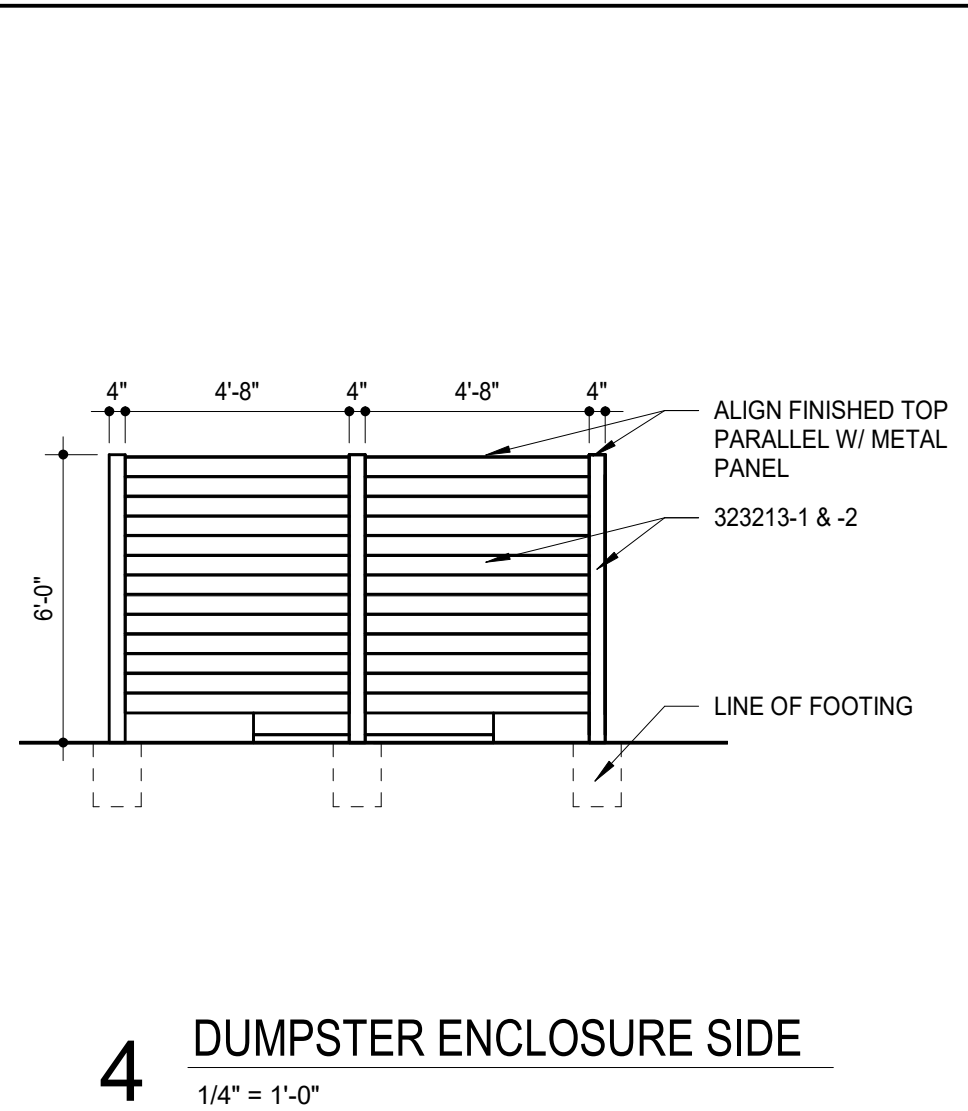
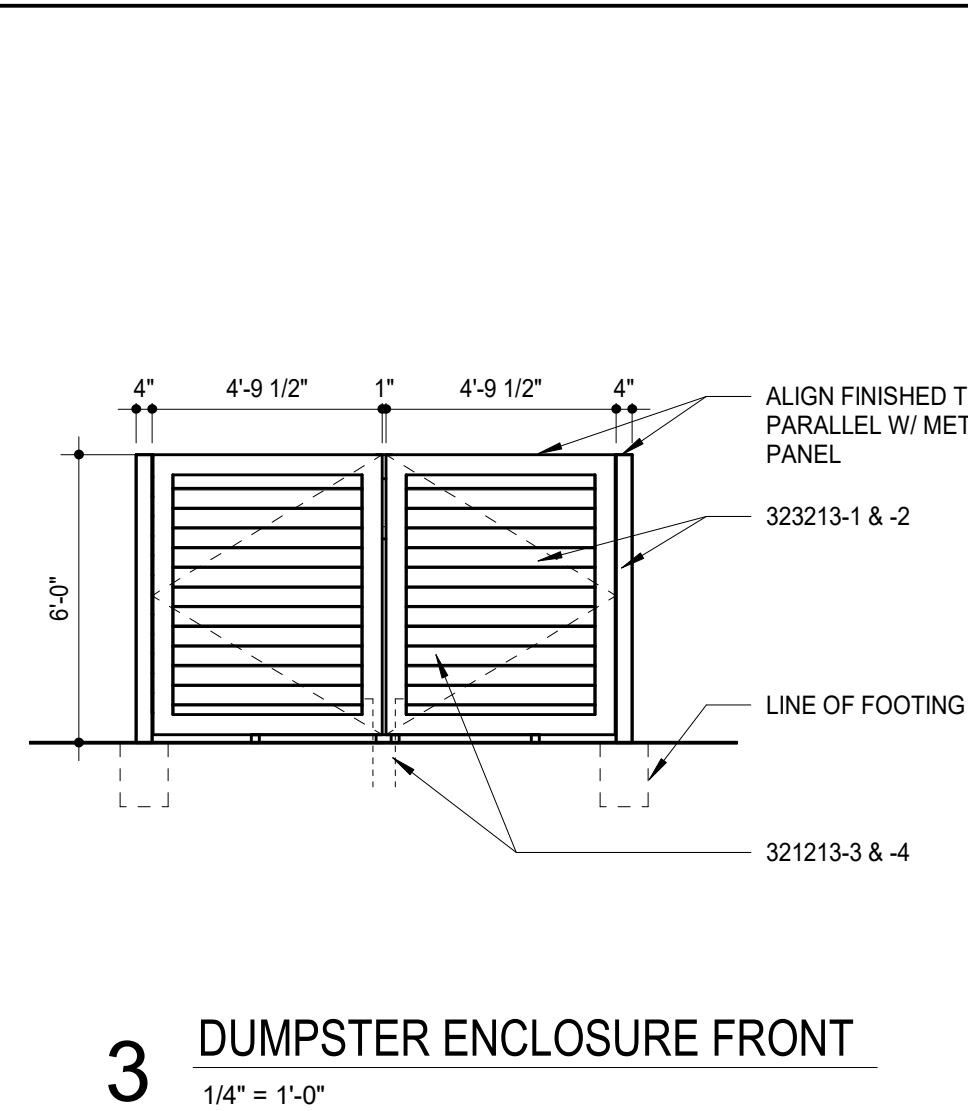
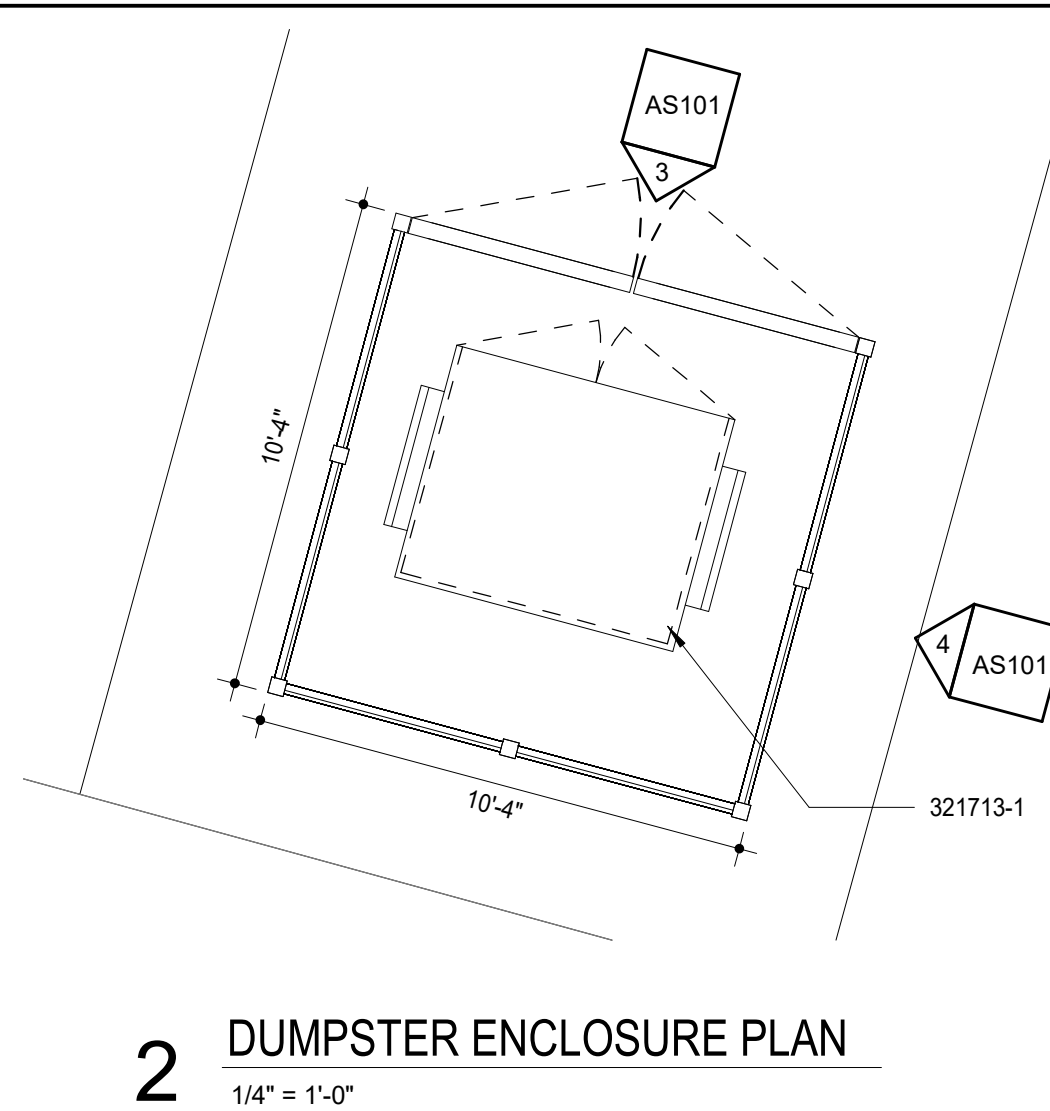
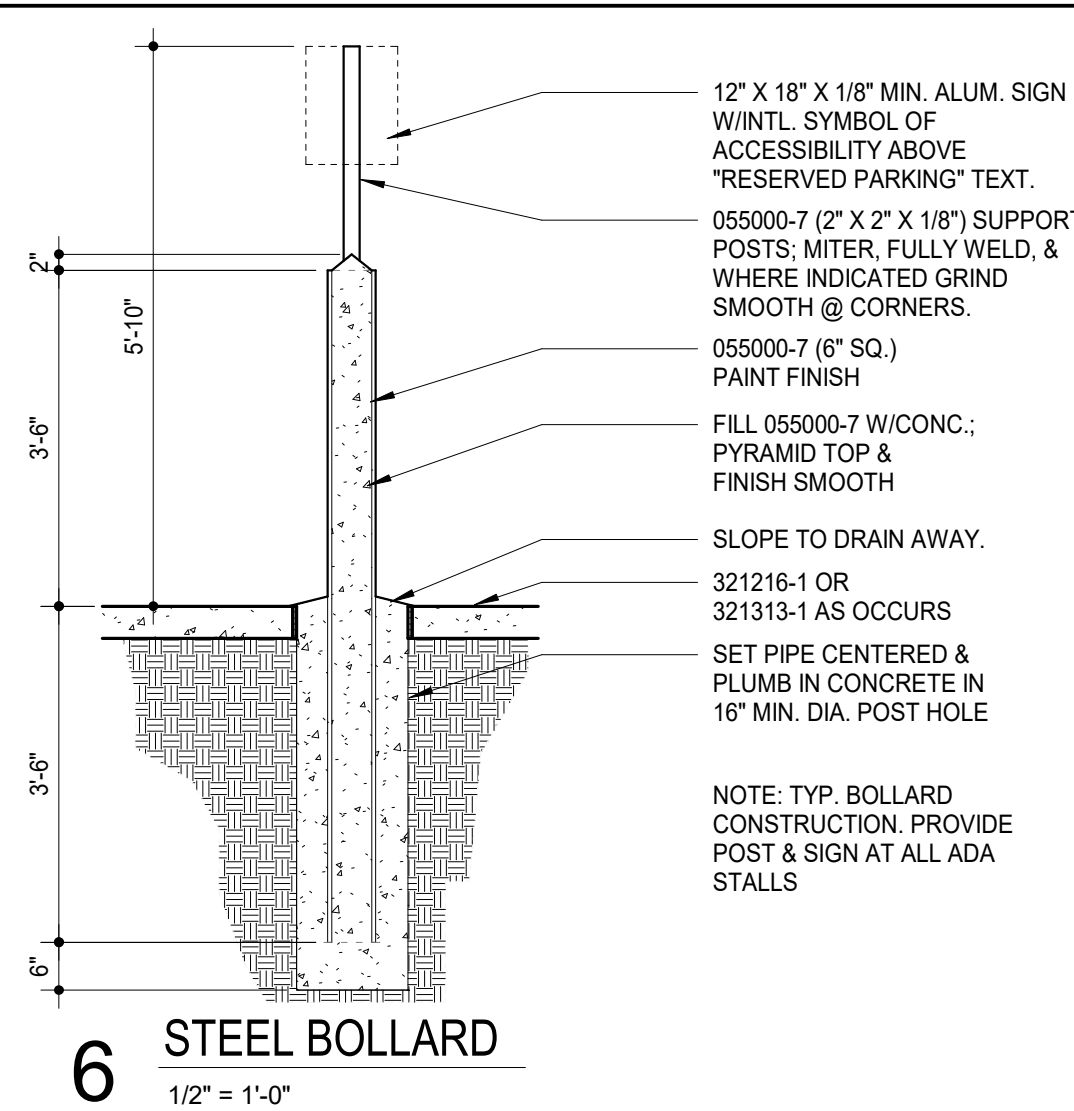
**SHEET CONTENTS:**  
● SITE UTILITY  
● IMPROVEMENT SITE PLAN

**HTK PROJECT NUMBER:**  
● 2020.2.7

**SHEET NUMBER:**  
**C402**  
CONSTRUCTION DOCUMENTS

**Bartlett & West**





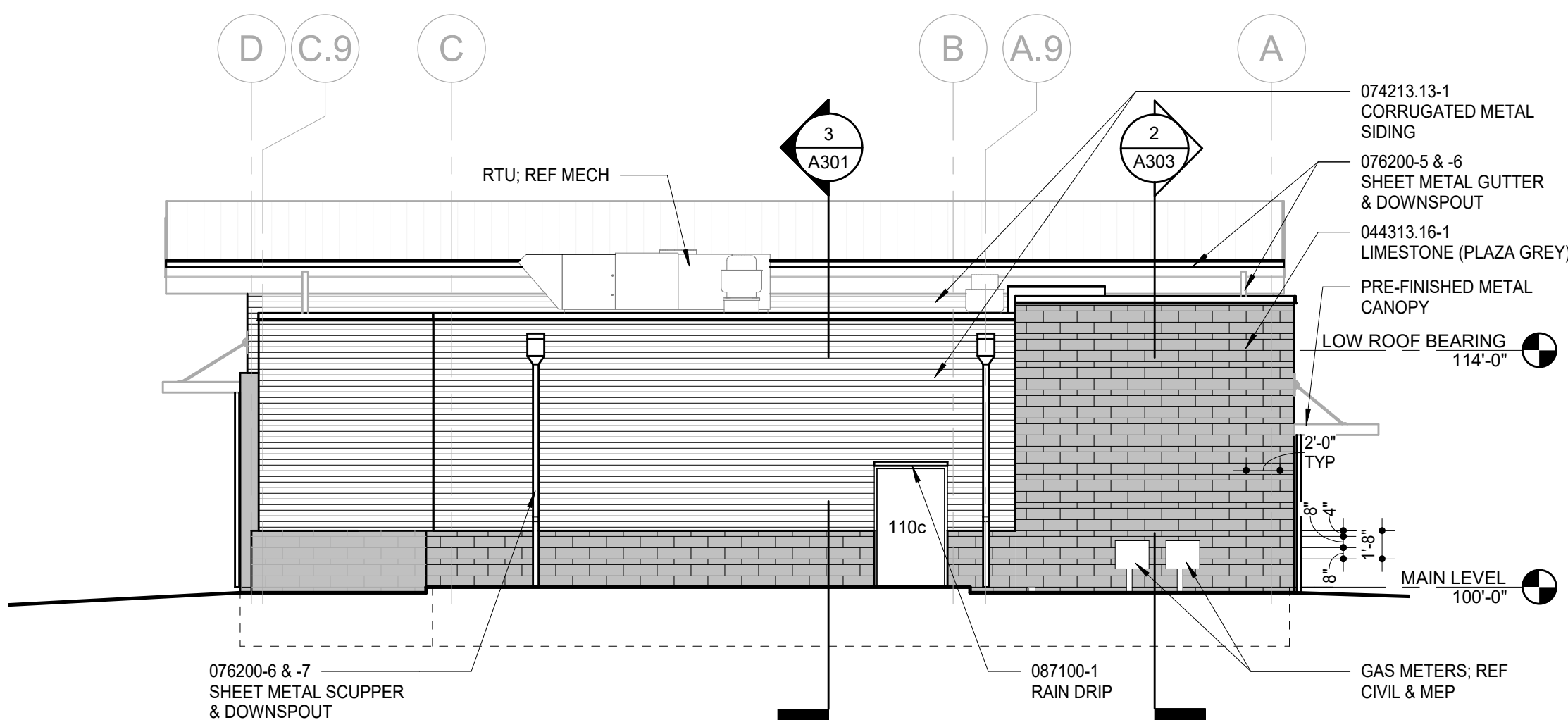
- ### SITE PLAN NOTES
- GENERAL: COORDINATE WITH WORK SHOWN ON STRUCTURAL, MECHANICAL, PLUMBING, AND ELECTRICAL DRAWINGS, REF. FE SHEET FOR EQUIP. COORDINATION
- EXISTING TERMINAL TO BE DEMOLISHED ENTIRELY UPON COMPLETION OF NEW TERMINAL, REF CIVIL FOR LOCATION
  - NEW AIRPORT TERMINAL, REF CIVIL FOR LOCATION
  - 323213: NEW DUMPSTER ENCLOSURE; REF CIVIL FOR LOCATION
  - NEW PARKING & DRIVE LANES; REF CIVIL
  - 323119.53: 4' HIGH DECORATIVE ALUM FENCE; REF CIVIL
  - 4' HIGH CHAIN LINK FENCE; REF CIVIL
  - LANDSCAPE BED; REF CIVIL
  - 4' HIGH DECORATIVE GATE; REF CIVIL
  - 055000 CONCRETE-FILLED PIPE BOLLARD WITH ADA SIGN, REF 6/AS101
  - GREASE INTERCEPTOR AND CLEANOUT; REF MEP & CIVIL
  - EXISTING FIRE HYDRANT
  - 055000 CONCRETE-FILLED PIPE BOLLARD, TYP @ EACH STALL; REF CIVIL
  - CONCRETE PAD FOR NEW TRANSFORMER; REF MEP
  - GAS METERS; REF MEP
  - METERS; REF MEP
  - PARKING LIGHTS & POLES; REF MEP

### KEYNOTES LEGEND

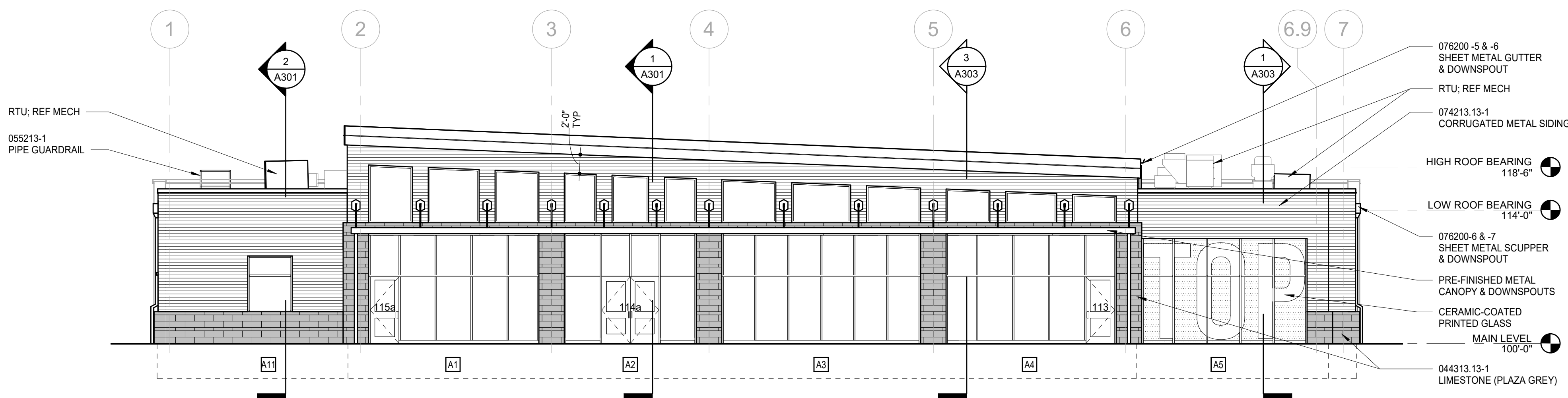
NOTE: KEYNOTES ARE DRAWN FROM A MASTER LIST AND MAY NOT BE SEQUENTIALLY NUMBERED. SIZES (EX: 24") OR OTHER INFO. FOLLOWING KEYNOTE ON DRAWINGS INDICATES CRITERIA FOR THOSE MATERIALS/LOCATIONS WHICH MAY DIFFER FROM THE STD. MATERIAL SPECIFIED.

033000	-1 CONCRETE STRUCTURE	081113	-1 HOLLOW METAL DOOR
	-2 CONCRETE FLOOR SLAB		-2 HOLLOW METAL FRAME
	-3 VAPOR BARRIER		-3 FRAME ANCHOR
	-4 WELDED WIRE FABRIC	081416	-1 FLUSH WOOD DOOR
	-5 STEEL REINFORCING	083113	-1 ACCESS DOOR
	-6 BAR	083300	-2 ACCESS DOOR FRAME
	-7 RUSTICATION JOINT		-1 OVERHEAD COILING
	-8 WATERSTOP		-1 SECURITY GRILLES
	-9 DOWEL ANCHOR	083513.131	-1 MULTIPANEL FOLDING ALUMINUM-FRAMED GLASS DOOR
	-10 SIDEWALK		-2 FOLDING DOOR TRACK
	-11 PREMOULDED JOINT FILLER		-3 FOLDING DOOR CARRIER
044313.13-1	-1 ANCHORED STONE MASONRY VENEER		-4 LAMB MOLD
	-2 ANCHOR	084113	-1 ALUMINUM ENTRANCE DOOR
	-3 WIRE REINFORCING		-2 ALUMINUM STOREFRONT FRAME
	-4 THROUGH WALL		-3 RAIN DRIP GUARD
	-5 FLASHING	087100	-1 GLAZING (AS SCHEDULED)
	-6 CONTROL JOINT STRIP	088000	-1 MIRROR
	-7 COMPRESSIBLE FILLER	088300	-1 STEEL STUD (")
	-8 WEEP HOLE/EXT	082216	-1 STEEL STUD RUNNER (")
	-9 CAVITY DRAINAGE MATERIAL		-3 FURRING CHANNEL
	-10 TERMINATION BAR	092900	-1 GYPSUM BOARD (")
051200	-1 STEEL BEAM		-2 CEMENTITIOUS TILE BACKER PANEL
	-2 STEEL COLUMN		-3 ACoustICAL SEALANT
	-3 STEEL TUBE		-4 ACoustICAL INSULATION (")
	-4 STEEL CHANNEL	053100	-1 METAL DECKING
	-5 STEEL LANTREL		-2 METAL EDGE TRIM
	-6 STEEL PIPE		-3 AUXILIARY SUPPORT FRAMING
	-7 STEEL TUBE		-4 METAL CONTROL JOINT
	-8 STEEL PLATE		-5 HIGH IMPACT GYPSUM BOARD
	-9 STEEL LINDER	054000	-1 COLD FORMED METAL FINISHING COMPOUND
	-10 TRENCHDRAIN COVER		-11 CONCRETE INTERIOR CORNER BEAD
	-11 SLOTTED METAL CHANNEL	055000	-12 CERAMIC MOSAIC TILE (")
	-12 STEEL THREADED ROD		-2 GLAZED WALL TILE (")
055013	-1 PIPE GUARDRAIL		-3 PORCELAIN FLOOR TILE (")
081053	-2 2X WOOD NAILED (")		-4 TILE BASE
	-3 2X WOOD BLOCKING (")		-5 TILE CAP
	-4 1X WOOD CONTINUOUS (")	093013	-1 SETTING BED
	-5 RLYWOOD BACKER PANEL		-2 CRACK ISOLATION MEMBRANE
	-6 SHEATHING	096513	-1 RESILIENT WALL BASE
	-7 FIBERGLASS SHEATHING		-2 RESILIENT FLOOR TILE
	-8 PLASTIC LAMINATE-FACED ARCHITECTURAL CABINETS	096519	-1 RESILIENT FLOOR TILE
	-9 HIGH PRESSURE LAMINATE	096723	-1 RESILIENT FLOORING
	-10 CABINET LINER	096913	-1 CARPET TILE
	-11 LAMINATE	097200	-1 WALL COVERING
	-12 PARTICLE BOARD	099113	-1 EXTERIOR PAINT
	-13 3MM EDGE MOLDING	101419	-1 INTERIOR PAINT
	-14 SOLID WOOD BLOCKING		-2 DIMENSIONAL LETTER SIGNAGE
	-15 HARDWOOD	101423	-1 PANEL SIGNAGE
	-16 STEEL TUBELLEG FRAME	10213.171	-1 PHENOLIC CORE TOILET COMPARTMENT
	-17 DOOR HANG		-2 URINAL SCREEN
	-18 DOOR/DRAWER PULL	102800	-1 CORNER GUARD
	-19 WOOD HANGER CHAIR RAIL		-2 WALL-END GUARD
	-20 DRAWER	102800	-1 SOAP DISPENSER
	-21 PLASTIC LAMINATE FACED SHELF SUPPORT		-2 TOILET TISSUE DISPENSER
	-22 FOUNDATION WALL OR INSULATION (R)	072100	-1 PAPER TOWEL DISPENSER
	-23 CAVITY WALL INSULATION (R)		-2 FRAMED MIRROR
	-24 BUILDING INSULATION - UNFACED (R)		-3 SANITARY NAPKIN DISPENSER
	-25 SILL SEALER		-4 SANITARY NAPKIN DISPENSER
	-26 FLUID-APPLIED MEMBRANE AIR BARRIERS	072726	-1 GLOB BAR
	-27 STANDING SEAM METAL ROOF PANEL		-2 WASTE RECEPTACLE
	-28 ROOF INSULAT - FLAT		-3 SHOWER SEAT
	-29 FELT UNDERLAYMENT		-4 SHOWER CURTAIN ROD
	-30 COMPOSITE FRAME SUPPORT SYSTEM FOR CONTINUOUS INSULATION		-5 COAT/ROBE HOOK
	-31 FORMED METAL WALL PANEL	074113.16-1	-1 TOWEL BAR
	-32 TRIM		-2 SHOWER CURTAIN STATION
	-33 Z-FURRING (")		-3 QUARTZ SURFACING COUNTERTOP
	-34 METAL SOFFIT PANEL		-4 QUARTZ SURFACING COUNTERTOP
	-35 TRIM	074293	-1 FIRE EXTINGUISHER CABINET
	-36 Z-FURRING (")		-2 SOLID AWNING
	-37 PIV ROOFING	107316	-1 LOUVERED AWNING
	-38 ROOF INSULATION - FLAT		-2 WALL MOUNTED ALUMINUM CANOPY
	-39 ROOF INSULATION - TAPERED		-3 CANOPY DOWNSPOUT
	-40 VAPOR RETARDER		-4 HANGAR SUPPLY ROD
	-41 COVER BOARD		-5 ROLLER WINDOW SHADES
	-42 WALKWAY PROTECTION	122413	-1 PLASTIC LAMINATE-CLAD COUNTERTOP
	-43 SHEET METAL FLASHING AND COUNTERFLASHING	128523.131	-1 SILL SKIRT
	-44 PREFINISHED CONT		-2 QUARTZ SURFACING COUNTERTOP
	-45 METAL FLASHING		-3 QUARTZ WALL-CLADDING
	-46 METAL FASCIA	312000	-1 EXTERIOR FILL
	-47 SHEET METAL GUTTER		-2 INTERIOR FILL
	-48 SHEET METAL DOWNSPOUT		-3 GRANULAR DRAINAGE COURSE
	-49 ROOF HATCH		-4 DRAINAGE BACKFILL
	-50 PREFABRICATED CURB		-5 SUBBASE COURSE
077200	-1 SNOW GUARD		-6 DRAINAGE GEOTEXTILE
	-2 JOINT SEALANT - RAKE WHERE REQUIRED	321313	-1 SEPARATION GEOTEXTILE
	-3 JOINT FILLER	321373	-1 CONCRETE PAVING JOINT SEALANT
	-4 GASKET		-2 RUBBER PARKING BUMPER
	-5 BACKER ROD	321723	-1 DECORATIVE METAL FENCE
	-6 ACoustICAL JOINT SEALANT	323119.531	-1 LOUVERED FENCE
		323213	-2 LOUVERED GATE
			-3 CANE BOLT

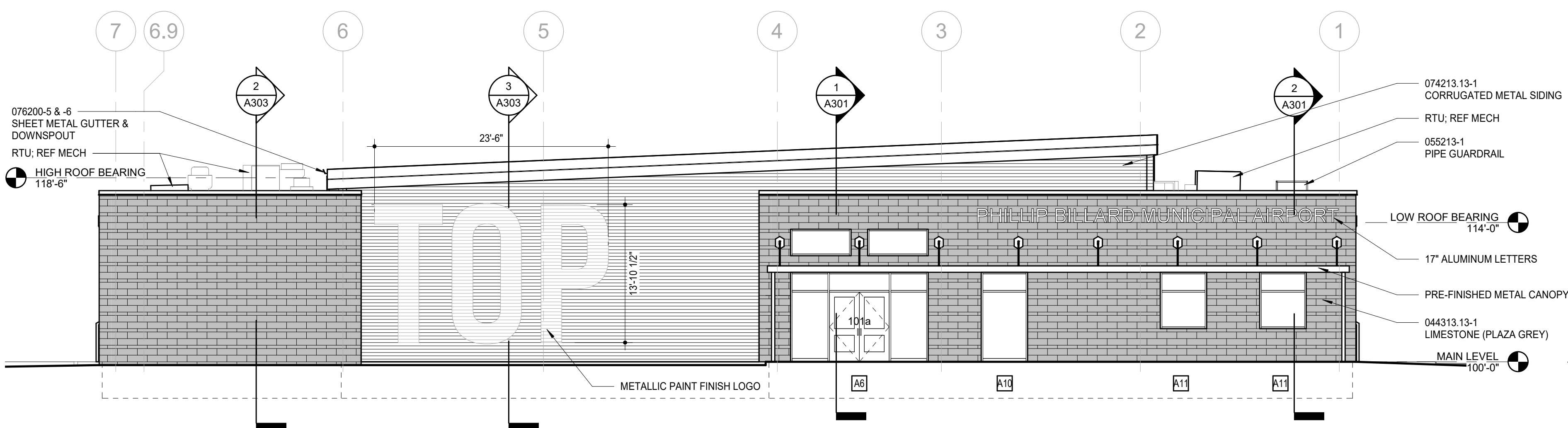




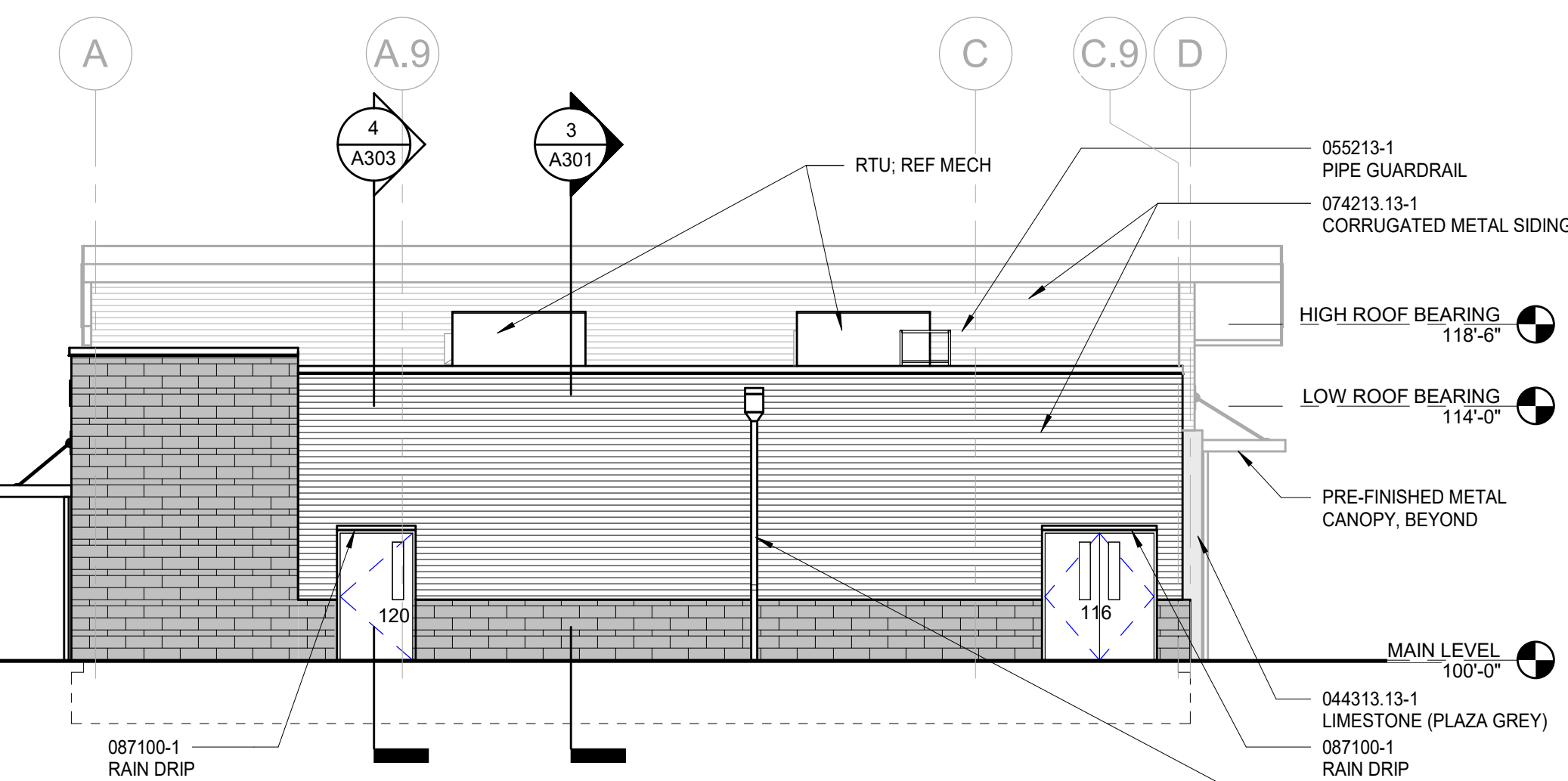
1 EAST ELEVATION  
1/8" = 1'-0"



2 SOUTH ELEVATION  
1/8" = 1'-0"



3 NORTH ELEVATION  
1/8" = 1'-0"



4 WEST ELEVATION  
1/8" = 1'-0"

## KEYNOTES LEGEND

NOTE: KEYNOTES ARE DRAWN FROM A MASTER LIST AND MAY NOT BE SEQUENTIALLY NUMBERED. SIZES (EX: 24") OR OTHER INFO. FOLLOWING KEYNOTE ON DRAWINGS INDICATES CRITERIA FOR THOSE MATERIALS LOCATIONS WHICH MAY DIFFER FROM THE STD. MATERIAL SPECIFIED.

083000	-1 CONCRETE STRUCTURE	081113	-1 HOLLOW METAL DOOR
-2	CONCRETE FLOOR SLAB	-2	HOLLOW METAL FRAME
-3	VAPOR BARRIER	3	FRAME ANCHOR
-4	WELDED WIRE FABRIC	081416	-1 FLUSH WOOD DOOR
-5	STEEL REINFORCING	081113	-1 ACCESS DOOR
-6	RUSTICATION JOINT	-2	ACCESS DOOR FRAME
-7	WATERSTOP	083300	-1 SECURITY GRILLES
-8	DOWTAL ANCHOR	083513.13-1	MULTIPANEL FOLDING ALUMINUM-FRAMED GLASS DOOR
-9	SIDEWALK	-2	FOLDING DOOR TRACK
-10	PREMOLDED JOINT FILLER	-3	FOLDING DOOR CARRIER
044313.13-1	ANCHORED STONE MASCHWEENER	-4	RAID KOLD
-2	ANCHOR	084113	-1 ALUMINUM ENTRANCE DOOR
-3	WIRE REINFORCING	-2	ALUMINUM STOREFRONT FRAME
-4	FLASHING	087100	-1 RAIN DRIP GUARD
-5	CONTROL JOINT STRIP	088000	-1 GLAZING (AS SCHEDULED)
-6	COMPRESSIBLE FILLER	088300	-1 MIRROR
-7	WEEP HOLE/VENT	092216	-1 STEEL STUD (")
-8	CAVITY DRAINAGE MATERIAL	-2	STEEL STUD RUNNER (")
-9	TERMINATION BAR	-3	FURRING CHANNEL
-10	STEEL BEAMS	092900	-1 GYPSUM BOARD (")
-11	STEEL COLUMN	-2	CONTINUOUS TILE BACKER PANEL
-12	STEEL TUBE	-3	ACOUSTICAL SEALANT
-13	METAL DECKING	-4	ACOUSTICAL INSULATION
-14	FLEXIBLE CLOSURE STRIPS	-5	METAL EDGE TRIM
-15	STEEL COMPOSITE DECKING	-6	AUXILIARY SUPPORT FRAMING
-16	ACOUSTICAL METAL DECKING	-7	METAL CONTROL JOINT
051200	-1 STEEL BEAMS	-8	HIGH IMPACT GYPSUM BOARD
-2	STEEL COLUMN	-9	CONCRETE INTERIOR FINISHING COMPOUND
-3	STEEL TUBE	-10	CORNER BEAD
053100	-1 METAL DECKING	-11	CORNER BEAD (X")
-2	FLEXIBLE CLOSURE STRIPS	-12	CORNER BEAD (X")
-3	STEEL COMPOSITE DECKING	-13	CORNER BEAD (X")
053400	-1 ACOUSTICAL METAL DECKING	-14	GLAZED WALL TILE (X")
054000	-1 COLD FORMED METAL FRAMING	-15	PORCELAIN FLOOR TILE (X")
055000	-1 STEEL ANGLE	-16	TILE BASE
-2	STEEL CHANNEL	-17	TILE CAP
-3	STEEL LINTEL	-18	SETTING BED
-4	STEEL PIPE	-19	CRACK ISOLATION MEMBRANE
-5	STEEL TUBE	-20	METAL EDGE STRIP
-6	STEEL PLATE	095113	-1 ACOUSTICAL PANEL (X")
-7	STEEL LADDER	-2	CEILING SUSPENSION SYSTEM
-8	STEEL SIDEWALK TRENCHDRAIN COVER	-3	EDGE MOLD TRIM
-9	SLOTTED METAL CHANNEL	-4	AUXILIARY SUPPORT FRAMING
-10	STEEL THREADED ROD	061600	-1 SHEATHING
-11	PIPE GUARDRAIL	-2	FIBERGLASS SHEATHING
061003	-1 2X WOOD NAILES (")	065113	-1 RESILIENT WALL BASE
-2	2X WOOD BLOCKING (")	-2	EDGE STRIP
-3	1X WOOD CONTINUOUS (")	065119	-1 RESILIENT FLOOR TILE
-4	PLYWOOD BACKER PANEL	065723	-1 RESILIENT FLOORING
061600	-1 SHEATHING	065813	-1 CARPET TILE
-2	FIBERGLASS SHEATHING	065723	-1 WALL COVERING
064116	-1 PLASTIC LAMINATE- FACED ARCHITECTURAL CABINETS	065813	-1 EXTERIOR PAINT
-2	HIGH PRESSURE LAMINATE	065813	-1 INTERIOR PAINT
-3	CABINET LINER	065813	-1 DIMENSIONAL LETTER SIGNAGE
-4	PARTICLE BOARD	101419	-1 PANEL SIGNAGE
-5	PLYWOOD	101423	-1 PHENOLIC CORE TOILET COMPARTMENT
-6	3MM EDGE MOLDING	102113.17	-1 URINAL SCREEN
-7	SOLID WOOD BLOCKING	-2	URINAL GUARD
-8	HARDWOOD	-3	WALL-END GUARD
-9	STEEL TUBE/LEG FRAME	-4	SOAP DISPENSER
-10	DOOR HINGE	102800	-1 TOILET TISSUE DISPENSER
-11	DOOR/DRAWER PULL	-2	PAPER TOWEL DISPENSER
-12	WOOD HANGER ROD	-3	FRAMED MIRROR
-13	DRAWER	-4	SANITARY MARKING DISPENSER
-14	PLASTIC LAMINATE FACED SHELF SUPPORT	-5	SANITARY MARKING DISPOSER
072100	-1 UNDER SLAB INSULATION (R-)	-6	WASTE RECEPTACLE
-2	CAVITY WALL INSULATION (R-)	-7	SHOWER SEAT
-3	BUILDING INSULATION - UNFACED (R-)	-8	SHOWER CURTAIN ROD
-4	SILL SEALER	-9	COATROBE HOOK
072726	-1 FLUID-APPLIED MEMBRANE AIR BARRIERS	-10	TOWEL BAR
074113.16-1	STANDING SEAM METAL ROOF PANEL	-11	SHOWER CURTAIN
-2	ROOF INSULAT - FLAT	-12	SHOWER CHANGING STATION
-3	FEL UNDERLAYMENT	-13	ELECTRIC HAND DRYER (REF. ELEC)
074210.12-1	COMPOSITE FRAME SUPPORT SYSTEM FOR CONTINUOUS INSULATION	-14	FIRE EXTINGUISHER CABINET
074213.13-1	FORMED METAL WALL PANEL	104413	-1 FIRE EXTINGUISHER CABINET
-2	TRIM	107313	-1 SOLID AWNING
074293	-1 METAL SOFFIT PANEL	-2	LOUVERED AWNING
-3	INTERIOR LINER PANEL	-3	CANOPY
-4	Z-FURRING (")	-4	CANOPY DOWNSPOUT
-5	TRIM	-5	HANGAR SUPPLY ROD
075419	-1 PVC ROOFING	-6	ROLLER WINDOW SHADES
-2	ROOF INSULATION - FLAT	-7	PLASTIC LAMINATE-CLAD COUNTERTOP
-3	ROOF INSULATION - TAPERED	-8	PLASTIC LAMINATE-CLAD BILL SKIRT
-4	VAPOR RETARDER	-9	QUARTZ SURFACING COUNTERTOP
-5	COVER BOARD	-10	QUARTZ SURFACING WINDOW SILL
-6	WALKWAY PROTECTION	-11	QUARTZ WALL-CLADDING
076200	-1 SHEET METAL FLASHING AND COUNTERFLASHING	-12	INTERIOR FILL
-2	PREFINISHED CONT METAL FLASHING	-13	EXTERIOR FILL
-3	METAL FASCIA	-14	GRANULAR DRAINAGE COURSE
-4	SHEET METAL GUTTER	-15	GRANULAR BACKFILL
-5	SHEET METAL DOWNSPOUT	-16	SEPARATION GEOTEXTILE
-6	SHEET METAL SCUPPER	-17	CONCRETE PAVING
-7	ROOF HATCH	-18	CONCRETE PAVING JOINT SEALANTS
-8	PREFABRICATED CURB	-19	RUBBER PARKING BUMPER
-9	SNOW GUARD	-20	PAVEMENT MARKINGS
-10	JOINT SEALANT - RAKE	-21	DECORATIVE METAL FENCE
077200	-1 JOINT SEALANT - RAKE WHERE REQUIRED	-22	LOUVERED FENCE
077200	-2 JOINT SEALANT - RAKE WHERE REQUIRED	-23	LOUVERED GATE
-3	GASKET	-24	CANE BOLT
077200	-4 BACKER ROD	-25	
079219	-1 ACOUSTICAL JOINT SEALANT	-26	